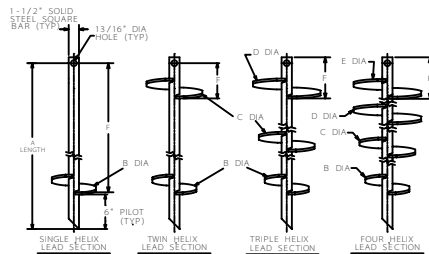
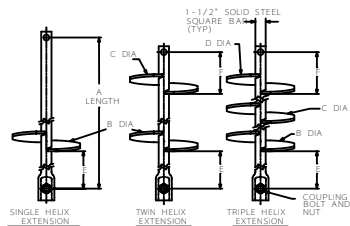


SS150
HELICAL PIERS AND ANCHORS

TORQUE STRENGTH RATING - 7,000 FT-LB
 ULTIMATE CAPACITY (TENSION/COMPRESSION) - 70 KIP
 * BASED ON A TORQUE FACTOR (K=10)
 SINGLE HELIX ULTIMATE STRENGTH - 40 KIP
 ULTIMATE TENSION STRENGTH (COUPLING BOLT) - 70 KIP



HELICAL EXTENSION SECTION						
CAT. NO.	A	B	C	D	E	F
C150-0176	47"	12"	12"	12"	3"	8"
C150-0177	81"	16"	16"	16"	3"	8"
C150-0178	124"	18"	18"	18"	3/8"	8"

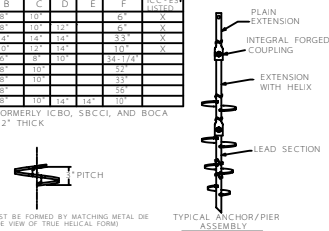
↑ ICC-ES LISTINGS FORMERLY ICBO, SBCCI, AND BOCA

LEAD SECTION						
CAT. NO.	A	B	C	D	E	F
C150-0165	55"	8"	10"	12"	8"	8"
C150-0166	81"	8"	10"	12"	8"	8"
C150-0167	124"	12"	12"	12"	3"	8"
C150-0168	81"	10"	12"	16"	10"	8"
C150-0490	81"	8"	10"	10"	3"	8"
C150-0491	81"	8"	10"	10"	3"	8"
C150-0492	81"	8"	10"	10"	3"	8"
C150-0493	81"	8"	10"	10"	3"	8"
C150-0494	81"	8"	10"	10"	3"	8"

↑ ICC-ES LISTINGS FORMERLY ICBO, SBCCI, AND BOCA
 ↑ HELIX MATERIAL 1/2" THICK

== NOTES ==

- HOT DIP GALVANIZED PER ASTM A153 - (LATEST REVISION).
- LEAD AND EXTENSION SECTION LENGTHS AND HELIX SPACINGS ARE NOMINAL.
- SHAFT MATERIAL - HOT ROLLED ROUND - CORNERED - SQUARE (RCS) SOLID STEEL BARS PER ASTM A29; MINIMUM YIELD STRENGTH=90 KSI.
- HELIX MATERIAL - HOT ROLLED LOW CARBON STEEL SHEET, STRIP, OR PLATE PER ASTM A656, OR A1018 GRADE 80; MINIMUM YIELD STRENGTH=80 KSI; 3/8" THICK.
- COUPLING BOLTS: 3/4" DIAMETER X 3" LONG HEX HEAD PER ASTM A325 TYPE 1.
- NOMINAL SPACING BETWEEN HELIX PLATES IS THREE TIMES THE DIAMETER OF THE LOWER HELIX.
- MANUFACTURER TO HAVE IN EFFECT INDUSTRY RECOGNIZED WRITTEN QUALITY CONTROL FOR ALL MATERIALS AND MANUFACTURING PROCESSES.
- ALL WELDING TO BE DONE BY WELDERS CERTIFIED UNDER SECTION 5 OF THE AWS CODE D11.
- SEE ICC EVALUATION SERVICE INC., EVALUATION REPORT NO. ER-5110 FOR ALLOWABLE VALUES AND/OR CONDITIONS OF USE CONCERNING MATERIAL PRESENTED IN THIS DOCUMENT.
- REFER TO DRAWING S4150-0144 FOR PLAIN EXTENSIONS AND TERMINATIONS.



HELIX MUST BE FORMED BY MATCHING METAL DIE (SIDE VIEW OF TRUE HELICAL FORM)

ICC-ES E1030	ICC-ES E1030	ICC-ES E1030	ICC-ES E1030	ICC-ES E1030	ICC-ES E1030
ICC-ES E1030	ICC-ES E1030	ICC-ES E1030	ICC-ES E1030	ICC-ES E1030	ICC-ES E1030

CHANCE TOLERANCE CHART

HUBBELL POWER SYSTEMS

SS150 LEADS AND HELICAL EXTENSIONS

SEE CHART

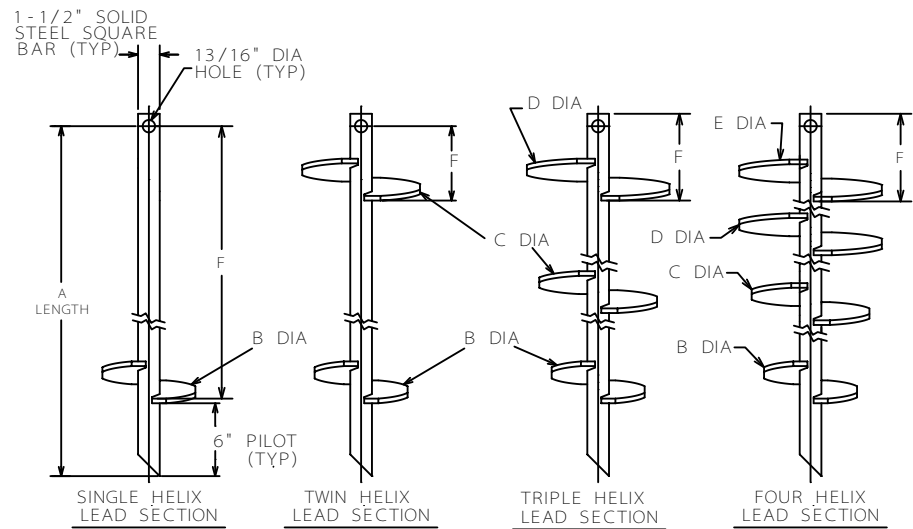
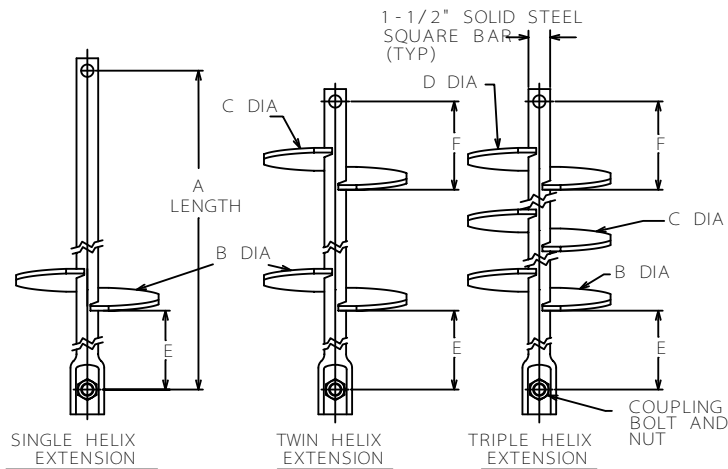
DATE: 04/25/03

BY: KSH

1 OF 2

SS150 HELICAL PIERS AND ANCHORS

TORQUE STRENGTH* RATING - 7,000 FT - LB
 ULTIMATE CAPACITY (TENSION/COMPRESSION) - 70 KIP
 * BASED ON A TORQUE FACTOR (K)=10
 SINGLE HELIX ULTIMATE STRENGTH - 40 KIP
 ULTIMATE TENSION STRENGTH (COUPLING BOLT) - 70 KIP



HELICAL EXTENSION SECTION							
CAT. NO.	A	B	C	D	E	F	ICC-ES† LISTED
C150-0176	47"	14"			37"		X
C150-0177	81"	14"	14"		37"	8"	X
C150-0178	124"	14"	14"	14"	36"	8"	X

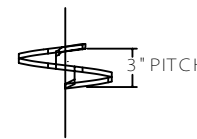
† ICC-ES LISTINGS FORMERLY ICBO, SBCCI, AND BOCA

LEAD SECTION							
CAT. NO.	A	B	C	D	E	F	ICC-ES† LISTED
C150-0168	35"	8"	10"			6"	X
C150-0169	63"	8"	10"	12"		6"	X
C150-0170	123"	14"	14"	14"		33"	X
C150-0163	82"	10"	12"	14"		10"	X
C150-0400	82-1/4"	6"	8"	10"		34-1/4"	
C150-0490	82"	8"	10"			52"	
C150-0472	63"	8"	10"			33"	
T150-0498*	59"	8"	10"			56"	
C150-0165	123"	8"	10"	14"	14"	10"	

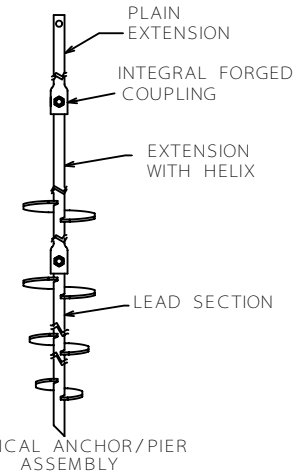
† ICC-ES LISTINGS FORMERLY ICBO, SBCCI, AND BOCA
 * HELIX MATERIAL 1/2" THICK

==NOTES==

- HOT DIP GALVANIZED PER ASTM A153 - (LATEST REVISION).
- LEAD AND EXTENSION SECTION LENGTHS AND HELIX SPACINGS ARE NOMINAL.
- SHAFT MATERIAL - HOT ROLLED ROUND-CORNERED-SQUARE (RCS) SOLID STEEL BARS PER ASTM A29; MINIMUM YIELD STRENGTH=90 KSI.
- HELIX MATERIAL - HOT ROLLED LOW CARBON STEEL SHEET, STRIP, OR PLATE PER ASTM A656, OR A1018 GRADE 80; MINIMUM YIELD STRENGTH=80 KSI; 3/8" THICK.
- COUPLING BOLTS: 3/4" DIAMETER X 3" LONG HEX HEAD PER ASTM A325 TYPE 1.
- NOMINAL SPACING BETWEEN HELIX PLATES IS THREE TIMES THE DIAMETER OF THE LOWER HELIX.
- MANUFACTURER TO HAVE IN EFFECT INDUSTRY RECOGNIZED WRITTEN QUALITY CONTROL FOR ALL MATERIALS AND MANUFACTURING PROCESSES.
- ALL WELDING TO BE DONE BY WELDERS CERTIFIED UNDER SECTION 5 OF THE AWS CODE D1.1.
- SEE ICC EVALUATION SERVICE INC., EVALUATION REPORT NO. ER-5110 FOR ALLOWABLE VALUES AND/OR CONDITIONS OF USE CONCERNING MATERIAL PRESENTED IN THIS DOCUMENT.
- REFER TO DRAWING SA150-0144 FOR PLAIN EXTENSIONS AND TERMINATIONS.



HELIX MUST BE FORMED BY MATCHING METAL DIE (SIDE VIEW OF TRUE HELICAL FORM)



CHANCE TOLERANCE CHART		HUBBELL POWER SYSTEMS	
CONFIDENTIAL: THIS DRAWING AND ITS CONTENTS ARE CONFIDENTIAL AND THE EXCLUSIVE PROPERTY OF HUBBELL POWER SYSTEMS. NO PUBLICATION, DISTRIBUTION OR COPIES MAY BE MADE WITHOUT THE WRITTEN CONSENT OF HUBBELL POWER SYSTEMS. HUBBELL POWER SYSTEMS UNPUBLISHED. ALL RIGHTS RESERVED UNDER THE COPYRIGHT LAWS.		TITLE SS150 LEADS AND HELICAL EXTENSIONS	
SIZE SC SA150-1001B	DWG NO. B	CAT / PART / ASSY NO. SEE CHART	REV H
DO NOT SCALE THIS DRAWING	DRN BY KSH	DATE 4/25/05	SHEET 1 OF 2

ICC-ES LISTED
RR 94-27

ICC-ES LISTED
ER-9504

ICC-ES LISTED
ER-5110