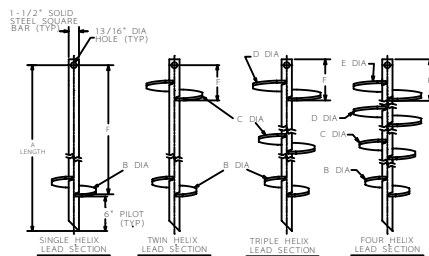
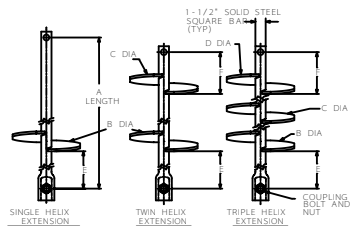


SS150
HELICAL PIERS AND ANCHORS

TORQUE STRENGTH RATING-7,000 FT-LB
ULTIMATE CAPACITY (TENSION/COMPRESSION)-70 KIP
* BASED ON A TORQUE FACTOR (K=10)
SINGLE HELIX ULTIMATE STRENGTH-40 KIP
ULTIMATE TENSION STRENGTH (COUPLING BOLT)-70 KIP

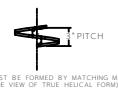
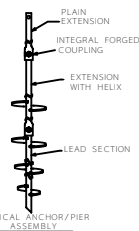


| HELICAL EXTENSION SECTION | | | | | | |
|---------------------------|------|-----|-----|----|----|---|
| CAT. NO. | A | B | C | D | E | F |
| C150-0176 | 47" | 12" | 12" | 3" | 8" | X |
| C150-0177 | 81" | 16" | 16" | 3" | 8" | X |
| C150-0178 | 124" | 16" | 16" | 3" | 8" | X |

↑ ICC-ES LISTINGS FORMERLY ICBO, SBCCI, AND BOCA

| LEAD SECTION | | | | | | |
|--------------|------|-----|-----|-----|-----|---|
| CAT. NO. | A | B | C | D | E | F |
| C150-0165 | 55" | 8" | 10" | 12" | 8" | X |
| C150-0166 | 81" | 8" | 10" | 12" | 8" | X |
| C150-0167 | 124" | 12" | 12" | 12" | 3" | X |
| C150-0168 | 81" | 8" | 10" | 12" | 10" | X |
| C150-0490 | 81" | 8" | 10" | 12" | 10" | X |
| C150-0491 | 81" | 8" | 10" | 12" | 10" | X |
| C150-0492 | 81" | 8" | 10" | 12" | 10" | X |
| C150-0493 | 81" | 8" | 10" | 12" | 10" | X |
| C150-0494 | 81" | 8" | 10" | 12" | 10" | X |

↑ ICC-ES LISTINGS FORMERLY ICBO, SBCCI, AND BOCA
↑ HELIX MATERIAL 1/2" THICK



- == NOTES ==
- HOT DIP GALVANIZED PER ASTM A153 - (LATEST REVISION).
 - LEAD AND EXTENSION SECTION LENGTHS AND HELIX SPACINGS ARE NOMINAL.
 - SHAFT MATERIAL- HOT ROLLED ROUND-CORNERED-SQUARE (RCS) SOLID STEEL BARS PER ASTM A29; MINIMUM YIELD STRENGTH=90 KSI.
 - HELIX MATERIAL- HOT ROLLED LOW CARBON STEEL SHEET, STRIP, OR PLATE PER ASTM A656, OR A1018 GRADE 80; MINIMUM YIELD STRENGTH=80 KSI; 3/8" THICK.
 - COUPLING BOLTS: 3/4" DIAMETER X 3" LONG HEX HEAD PER ASTM A325 TYPE 1.
 - NOMINAL SPACING BETWEEN HELIX PLATES IS THREE TIMES THE DIAMETER OF THE LOWER HELIX.
 - MANUFACTURER TO HAVE IN EFFECT INDUSTRY RECOGNIZED WRITTEN QUALITY CONTROL FOR ALL MATERIALS AND MANUFACTURING PROCESSES.
 - ALL WELDING TO BE DONE BY WELDERS CERTIFIED UNDER SECTION 5 OF THE AWS CODE D11.
 - SEE ICC EVALUATION SERVICE INC., EVALUATION REPORT NO. ER-5110 FOR ALLOWABLE VALUES AND/OR CONDITIONS OF USE CONCERNING MATERIAL PRESENTED IN THIS DOCUMENT.
 - REFER TO DRAWING S4150-0144 FOR PLAIN EXTENSIONS AND TERMINATIONS.

CHANCE TOLERANCE CHART

HUBBELL POWER SYSTEMS

SS150 LEADS AND HELICAL EXTENSIONS

SEE CHART

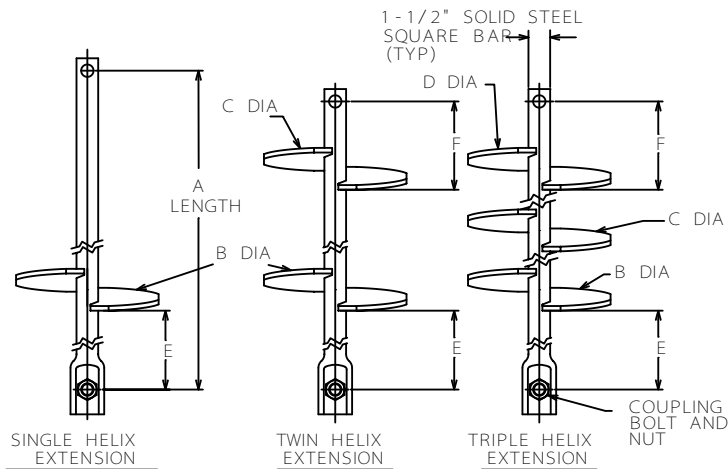
BY KSH 04/25/03

SS150-1000

1 OF 2

SS150 HELICAL PIERS AND ANCHORS

TORQUE STRENGTH* RATING - 7,000 FT - LB
 ULTIMATE CAPACITY (TENSION/COMPRESSION) - 70 KIP
 * BASED ON A TORQUE FACTOR (K)=10
 SINGLE HELIX ULTIMATE STRENGTH - 40 KIP
 ULTIMATE TENSION STRENGTH (COUPLING BOLT) - 70 KIP

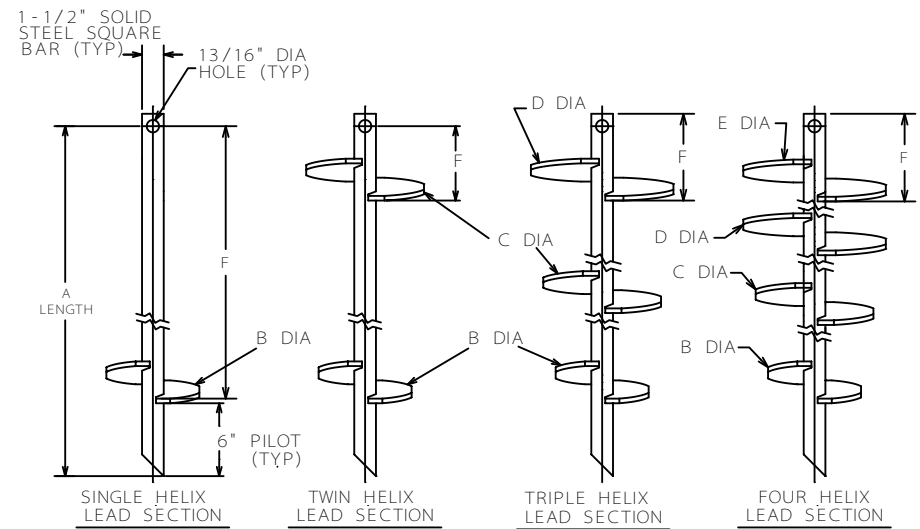


| HELICAL EXTENSION SECTION | | | | | | | ICC-ES† LISTED |
|---------------------------|------|-----|-----|-----|-----|----|----------------|
| CAT. NO. | A | B | C | D | E | F | |
| C150-0176 | 47" | 14" | | | 37" | | X |
| C150-0177 | 81" | 14" | 14" | | 37" | 8" | X |
| C150-0178 | 124" | 14" | 14" | 14" | 36" | 8" | X |

† ICC-ES LISTINGS FORMERLY ICBO, SBCCI, AND BOCA

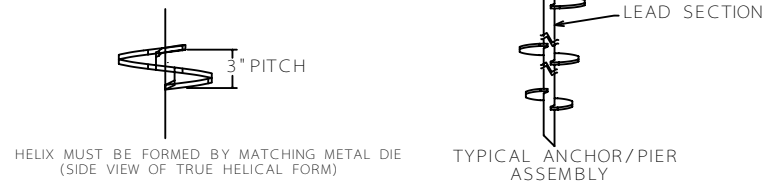
==NOTES==

- HOT DIP GALVANIZED PER ASTM A153 - (LATEST REVISION).
- LEAD AND EXTENSION SECTION LENGTHS AND HELIX SPACINGS ARE NOMINAL.
- SHAFT MATERIAL - HOT ROLLED ROUND-CORNERED-SQUARE (RCS) SOLID STEEL BARS PER ASTM A29; MINIMUM YIELD STRENGTH=90 KSI.
- HELIX MATERIAL - HOT ROLLED LOW CARBON STEEL SHEET, STRIP, OR PLATE PER ASTM A656, OR A1018 GRADE 80; MINIMUM YIELD STRENGTH=80 KSI; 3/8" THICK.
- COUPLING BOLTS: 3/4" DIAMETER X 3" LONG HEX HEAD PER ASTM A325 TYPE 1.
- NOMINAL SPACING BETWEEN HELIX PLATES IS THREE TIMES THE DIAMETER OF THE LOWER HELIX.
- MANUFACTURER TO HAVE IN EFFECT INDUSTRY RECOGNIZED WRITTEN QUALITY CONTROL FOR ALL MATERIALS AND MANUFACTURING PROCESSES.
- ALL WELDING TO BE DONE BY WELDERS CERTIFIED UNDER SECTION 5 OF THE AWS CODE D1.1.
- SEE ICC EVALUATION SERVICE INC., EVALUATION REPORT NO. ER-5110 FOR ALLOWABLE VALUES AND/OR CONDITIONS OF USE CONCERNING MATERIAL PRESENTED IN THIS DOCUMENT.
- REFER TO DRAWING SA150-0144 FOR PLAIN EXTENSIONS AND TERMINATIONS.



| LEAD SECTION | | | | | | | ICC-ES† LISTED |
|--------------|---------|-----|-----|-----|-----|---------|----------------|
| CAT. NO. | A | B | C | D | E | F | |
| C150-0168 | 35" | 8" | 10" | | | 6" | X |
| C150-0169 | 63" | 8" | 10" | 12" | | 6" | X |
| C150-0170 | 123" | 14" | 14" | 14" | | 33" | X |
| C150-0163 | 82" | 10" | 12" | 14" | | 10" | X |
| C150-0400 | 82-1/4" | 6" | 8" | 10" | | 34-1/4" | |
| C150-0490 | 82" | 8" | 10" | | | 52" | |
| C150-0472 | 63" | 8" | 10" | | | 33" | |
| T150-0498* | 59" | 8" | 10" | | | 56" | |
| C150-0165 | 123" | 8" | 10" | 14" | 14" | 10" | |

† ICC-ES LISTINGS FORMERLY ICBO, SBCCI, AND BOCA
 * HELIX MATERIAL 1/2" THICK



HELIX MUST BE FORMED BY MATCHING METAL DIE (SIDE VIEW OF TRUE HELICAL FORM)

| | | | |
|---|--------------|---|--------------|
| CHANCE TOLERANCE CHART | | HUBBELL POWER SYSTEMS | |
| CONFIDENTIAL: THIS DRAWING AND ITS CONTENTS ARE CONFIDENTIAL AND THE EXCLUSIVE PROPERTY OF HUBBELL POWER SYSTEMS. NO PUBLICATION, DISTRIBUTION OR COPIES MAY BE MADE WITHOUT THE WRITTEN CONSENT OF HUBBELL POWER SYSTEMS. HUBBELL POWER SYSTEMS UNPUBLISHED. ALL RIGHTS RESERVED UNDER THE COPYRIGHT LAWS. | | TITLE SS150 LEADS AND HELICAL EXTENSIONS | |
| SIZE SC SA150-1001B | DWG NO. B | CAT / PART / ASSY NO. SEE CHART | REV H |
| DO NOT SCALE THIS DRAWING | DRN BY KSH | DATE 4/25/05 | SHEET 1 OF 2 |

ICC-ES LISTED
RR 94-27

ICC-ES LISTED
ER-9504

ICC-ES LISTED
ER-5110