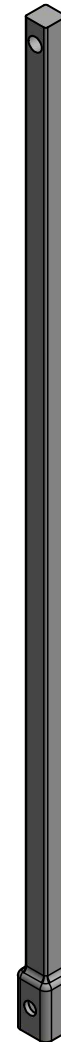


TYPICAL ANCHOR/PIER ASSEMBLY



The Northeast's Leading  
Authorized  
CHANCE Distributor  
732-747-7222  
earthanchoring.com

**-NOTES-**

1. HOT DIP GALVANIZED PER ASTM A153-(LATEST REVISION).
2. LEAD AND EXTENSION SECTION LENGTHS AND HELIX SPACINGS ARE NOMINAL.
3. NOMINAL SPACING BETWEEN HELIX PLATES IS THREE TIMES THE DIAMETER OF THE LOWER HELIX
4. SHAFT MATERIAL -HOT ROLLED ROUND CORNERED- SQUARE (RCS) SOLID STEEL BARS PER ASTM A29, MINIMUM YIELD STRENGTH= 90 KSI.
5. HELIX MATERIAL- HOT ROLLED LOW ALLOY STEEL SHEET, STRIP, OR PLATE PER ASTM A656, OR A1018 GRADE 80, MINIMUM YIELD STRENGTH= 80 KSI. FOR 8" HELIXES, 1/2" THICK FOR ALL OTHER HELIXES 3/8" THICK.
6. COUPLING BOLTS, 7/8" DIAMETER X 3-1/2" LONG HEX HEAD PER ASTM A193 GRADE B7.
7. MANUFACTURER TO HAVE IN EFFECT INDUSTRY RECOGNIZED WRITTEN QUALITY CONTROL FOR ALL MATERIALS AND MANUFACTURING PROCESSES.
8. ALL WELDING TO BE DONE BY WELDERS CERTIFIED UNDER SECTION 5 OF THE AWS CODE D1.1.
9. SEE ICC EVALUATION SERVICE INC. EVALUATION REPORT NO. ESR-2794 FOR NOMINAL, DESIGN, AND ALLOWABLE STRENGTH VALUES AND/OR CONDITION OF USE CONCERNING INFORMATION PRESENTED ON THIS DRAWING.

TORQUE STRENGTH\* RATING-10,500 FT-LB  
 ULTIMATE CAPACITY (COMPRESSION)-105 KIP  
 \* BASED ON A TORQUE FACTOR (Kt)-10  
 PER ICC-ES AC358 SECTION 3.13.2  
 NOMINAL TENSION STRENGTH (COUPLING BOLT)-100 KIP

ICC-ES LISTED ESR-2794

<b>CHANCE</b> <sup>®</sup>		<b>HUBBELL</b> <sup>®</sup> HUBBELL POWER SYSTEMS, INC.	
CONFIDENTIAL: THIS DRAWING AND ITS CONTENTS ARE CONFIDENTIAL AND THE EXCLUSIVE PROPERTY OF HUBBELL POWER SYSTEMS. NO PUBLICATION, DISTRIBUTION, OR COPIES MAY BE MADE WITHOUT THE WRITTEN CONSENT OF HUBBELL POWER SYSTEMS. HUBBELL POWER SYSTEMS UNPUBLISHED ALL RIGHTS RESERVED UNDER THE COPYRIGHT LAWS.		POWER SYSTEMS, INC.	
TITLE		SS 175 PLAIN EXTENSION	
SIZE	CAT / PART / ASSY NO.	DWG NO.	REV
C	C150-0013	SA150-0013	-
DO NOT SCALE THIS DRAWING	DRN BY BCT	DATE 05/23/16	SHEET 1 OF 1