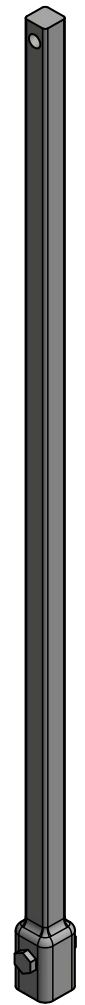


TYPICAL ANCHOR/PIER ASSEMBLY

-NOTES-

1. HOT DIP GALVANIZED PER ASTM A153-(LATEST REVISION).
2. EXTENSION SECTION LENGTHS ARE NOMINAL.
3. SHAFT MATERIAL- HOT ROLLED ROUND-CORNERED-SQUARE (RCS) SOLID STEEL BARS PER ASTM A29: MINIMUM YIELD STRENGTH=90 KSI.
4. COUPLING BOLTS : 3/4" DIAMETER X 3" LONG HEX HEAD PER ASTM A325 TYPE 1
5. MANUFACTURER TO HAVE IN EFFECT INDUSTRY RECOGNIZED WRITTEN QUALITY CONTROLL FOR ALL MATERIALS AND MANUFACTURING PROCESSES.
6. ALL WELDING TO BE DONE BY WELDERS CERTIFIED UNDER SECTION 5 OF THE AWS CODE D1.1.
7. SEE ICC EVALUATION SERVICE INC., EVALUATION REPORT NO. ER5110 FOR ALLOWABLE VALUES AND/OR CONDITIONS OF USE CONCERNING MATERIAL PRESENTED IN THIS DOCUMENT.



The Northeast's Leading
Authorized Distributor
732-747-7222
earthanchoring.com

TORQUE STRENGTH* RATING-7,000 FT-LB
ULTIMATE CAPACITY (COMPRESSION)-70 KIP
* BASED ON A TORQUE FACTOR (Kt)=10
SINGLE HELIX ULTIMATE STRENGTH- 40 KIP
ULTIMATE TENSION STRENGTH (COUPLING BOLT)-70 KIP

CHANCE [®]		HUBBELL [®] HUBBELL POWER SYSTEMS, INC.	
		POWER SYSTEMS, INC.	
CONFIDENTIAL: THIS DRAWING AND ITS CONTENTS ARE CONFIDENTIAL AND THE EXCLUSIVE PROPERTY OF HUBBELL POWER SYSTEMS. NO PUBLICATION, DISTRIBUTION, OR COPIES MAY BE MADE WITHOUT THE WRITTEN CONSENT OF HUBBELL POWER SYSTEMS. HUBBELL POWER SYSTEMS UNPUBLISHED ALL RIGHTS RESERVED UNDER THE COPYRIGHT LAWS.			
TITLE		SS150 PLAIN EXTENSION	
SIZE	CAT / PART / ASSY NO.	DWG NO.	REV
C	C150-0145	SA150-0145	-
DO NOT SCALE THIS DRAWING	DRN BY BCT	DATE 05/20/16	SHEET 1 OF 1