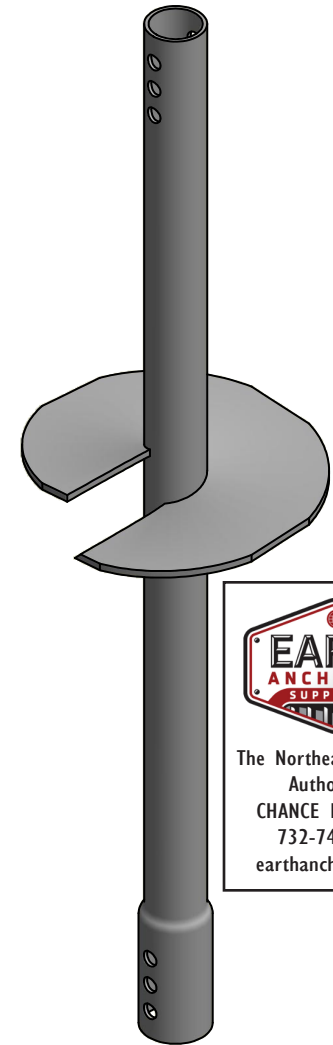
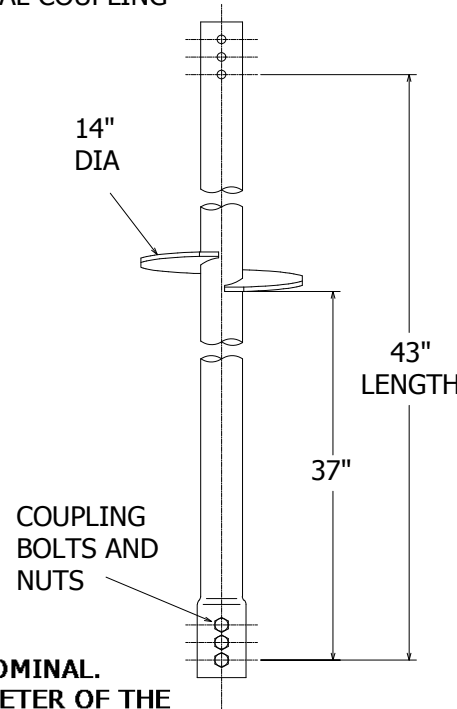
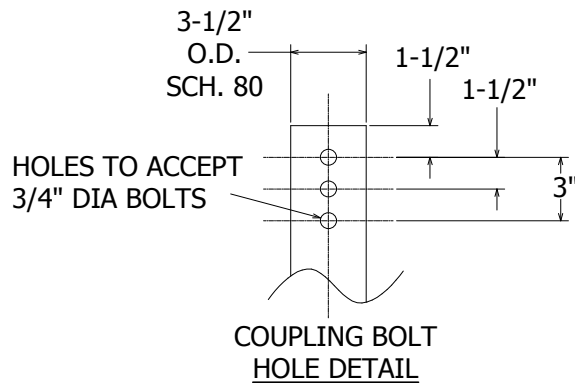
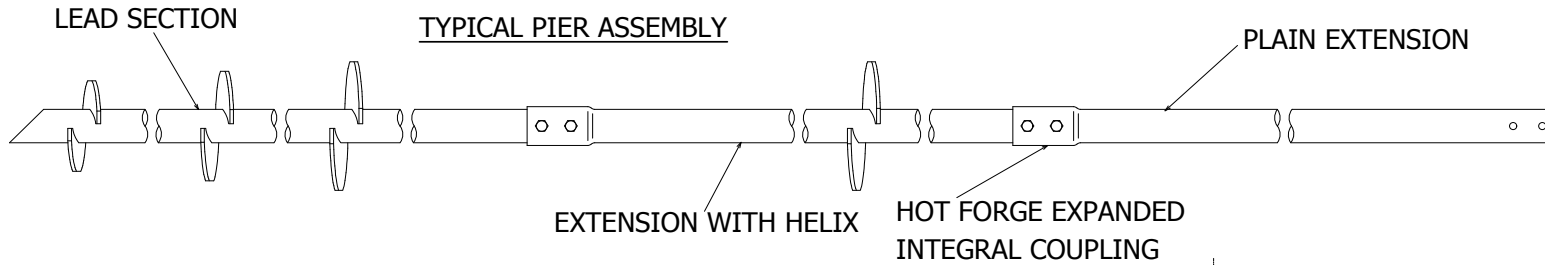
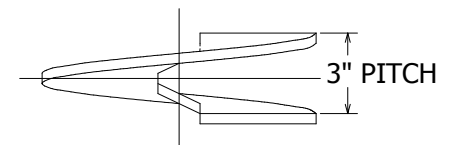


TORQUE STRENGTH RATING-13,000 FT-LB
 ULTIMATE CAPACITY* (TENSION/COMPRESSION)-91 KIP
 *BASED ON A TORQUE FACTOR OF (Kt)=7
 SINGLE HELIX ULTIMATE STRENGTH-50 KIP
 ULTIMATE TENSION STRENGTH (COUPLING BOLT)-120 KIP



The Northeast's Leading Authorized
 CHANCE Distributor
 732-747-7222
 earthanchoring.com



HELIX MUST BE FORMED BY MATCHING METAL DIE
 (SIDE VIEW)

- NOTES-**
- HOT DIP GALVANIZED PER ASTM A123-(LATEST REVISION).
 - LEAD AND EXTENSION SECTION LENGTHS AND HELIX SPACINGS ARE NOMINAL.
 - NOMINAL SPACING BETWEEN HELIX PLATES IS THREE TIMES THE DIAMETER OF THE LOWER HELIX
 - SHAFT MATERIAL PER ASTM A618 OR A500 GRADE B OR MECHANICAL EQUIVALENT.
 - HELIX MATERIAL- LOW CARBON STEEL MEETING THE GENERAL REQUIREMENTS OF AISI, OR ASTM A36, A572, A656, OR A1018.
 - COUPLING BOLTS, 3/4" DIAMETER X 5 3/4" LONG HEX HEAD PER SAE J429 GRADE 5
 - MANUFACTURER TO HAVE IN EFFECT INDUSTRY RECOGNIZED WRITTEN QUALITY CONTROL FOR ALL MATERIALS AND MANUFACTURING PROCESSES..
 - ALL WELDING TO BE DONE BY WELDERS CERTIFIED UNDER SECTION 5 OF THE AWS CODE D1.1.
 - EXTENSIONS MUST BE PROVIDED WITH A HOT FORGE EXPANDED INTEGRAL COUPLING CONNECTION ON ONE END.
 - REFER TO SA107-10044 DRAWING FOR A MORE COMPLETE LIST OF LEADS AND SA150-10045 FOR PLAIN AND HELICAL EXTENSIONS.

CHANCE [®]				
	TITLE RS3500.300 SINGLE HELIX EXTENSION			
CONFIDENTIAL: THIS DRAWING AND ITS CONTENTS ARE CONFIDENTIAL AND THE EXCLUSIVE PROPERTY OF HUBBELL POWER SYSTEMS. NO PUBLICATION, DISTRIBUTION, OR COPIES MAY BE MADE WITHOUT THE WRITTEN CONSENT OF HUBBELL POWER SYSTEMS. HUBBELL POWER SYSTEMS UNPUBLISHED ALL RIGHTS RESERVED UNDER THE COPYRIGHT LAWS.	SIZE C	CAT / PART / ASSY NO. C150-0217	DWG NO. SA150-0217	REV -
DO NOT SCALE THIS DRAWING	DRN BY BCT	DATE 04/27/16	SHEET 1 OF 1	